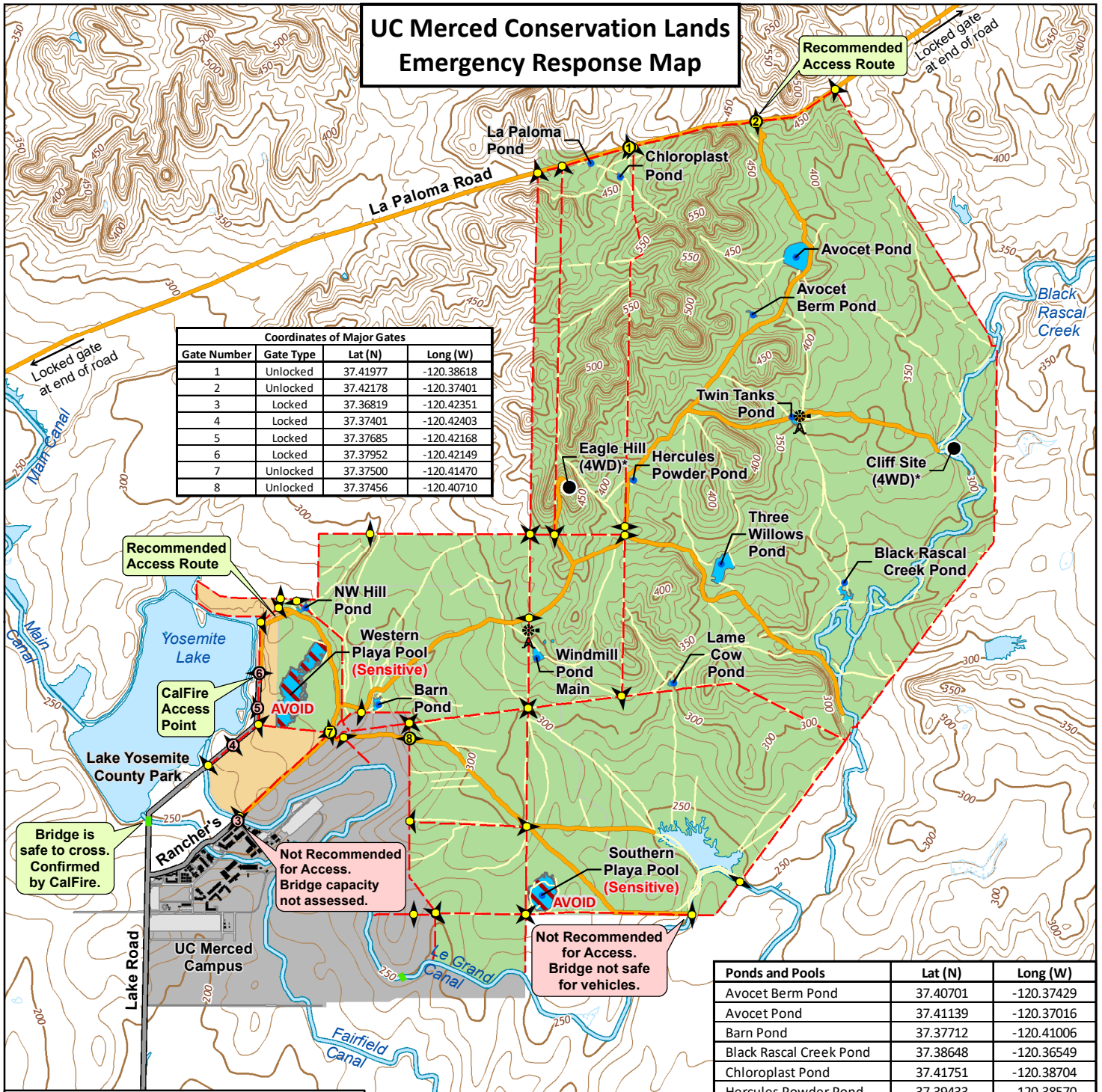


UC Merced Conservation Lands Emergency Response Map



Coordinates of Major Gates			
Gate Number	Gate Type	Lat (N)	Long (W)
1	Unlocked	37.41977	-120.38618
2	Unlocked	37.42178	-120.37401
3	Locked	37.36819	-120.42351
4	Locked	37.37401	-120.42403
5	Locked	37.37685	-120.42168
6	Locked	37.37952	-120.42149
7	Unlocked	37.37500	-120.41470
8	Unlocked	37.37456	-120.40710

Ponds and Pools	Lat (N)	Long (W)
Avocet Berm Pond	37.40701	-120.37429
Avocet Pond	37.41139	-120.37016
Barn Pond	37.37712	-120.41006
Black Rascal Creek Pond	37.38648	-120.36549
Chloroplast Pond	37.41751	-120.38704
Hercules Powder Pond	37.39433	-120.38570
La Paloma Pond	37.41855	-120.38985
Lame Cow Pond	37.37882	-120.38180
NW Hill Pond	37.38449	-120.41712
Southern Playa Pool	37.36254	-120.39438
Three Willows Pond	37.38790	-120.37727
Twin Tanks Pond	37.39917	-120.37057
Windmill Pond Main	37.38071	-120.39494

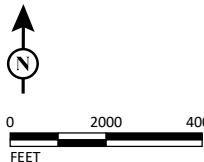
* Select sites, most trails, and even some dirt roads require 4WD access year-round or at select times during the wet season. Please consult the reserve director at 209-291-6897 for additional details.
Driving off road anytime during or within 48 hours of a rain event is not recommended.

UC Merced
 Police Dept: 209-228-2677
 Fire Dept: 209-217-7231



- Merced Vernal Pools and Grassland Reserve
- Merced County Preserve
- UC Merced Campus
- Playa Pool (Sensitive - Avoid at all times)
- Stock Pond (Avoid if possible)
- Canals and Creeks (Avoid if possible)

- Paved Road
- Dirt Road
- Bridge
- Trail
- 4WD Needed *
- Major Locked Gate (Knox lock proposed to be installed)
- Major Unlocked Gate
- Minor Unlocked Gate
- Fence
- Windmill



SOURCE: The National Map (2021).